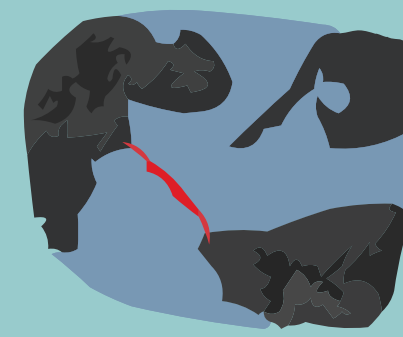


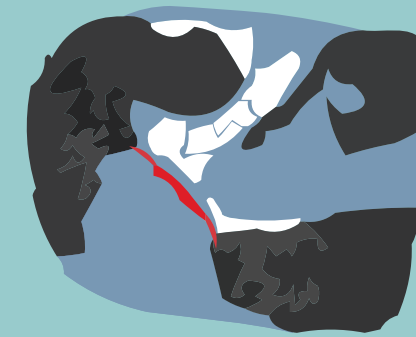
How did the Russian "Project of the Century" impact the environment?

Bridge with a dam effect

2017 satellite images show how the ice regime in Kerch Strait has deteriorated.



9 February



11 February



13 February

In winter and before the bridge was built, waters in the strait froze in a matter of days.

Today the bridge's narrowing of the Kerch Strait and its dozens of supports prevent ice removal.

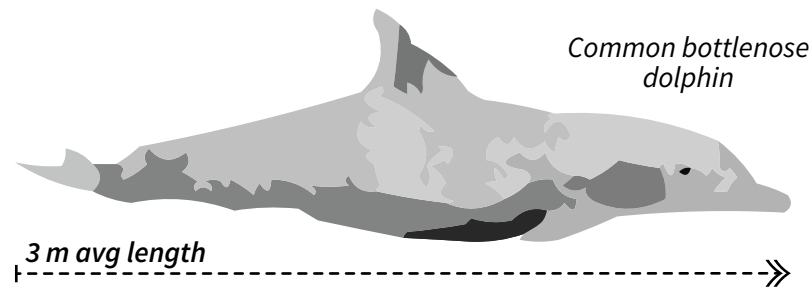
Russia nicknamed the Kerch bridge the "Project of the Century".



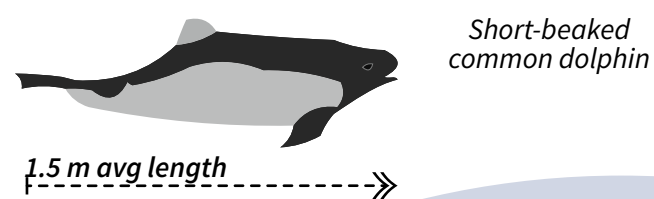
Importance for biodiversity

The waters of Kerch Strait are one of 18 areas of special importance for Mediterranean and Black Sea cetaceans.

Two dolphin species live in its waters:



Common bottlenose dolphin



Short-beaked common dolphin

Construction vs Dolphins

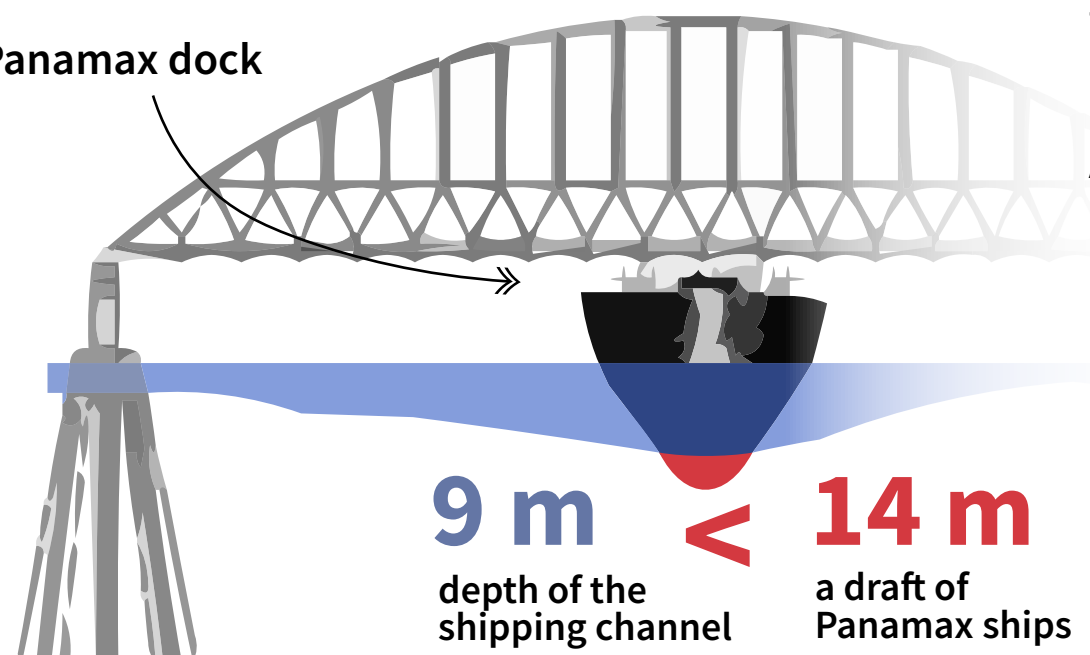
Since construction of the Kerch Bridge began, the number of dead dolphins increased significantly, likely due to noise pollution.



Goal – Complete control of the Sea of Azov

Ukrainian ports on the Sea of Azov are export-oriented. Not infrequently, ships as large as the Panamax dock here.

Panamax dock



9 m

depth of the shipping channel

<

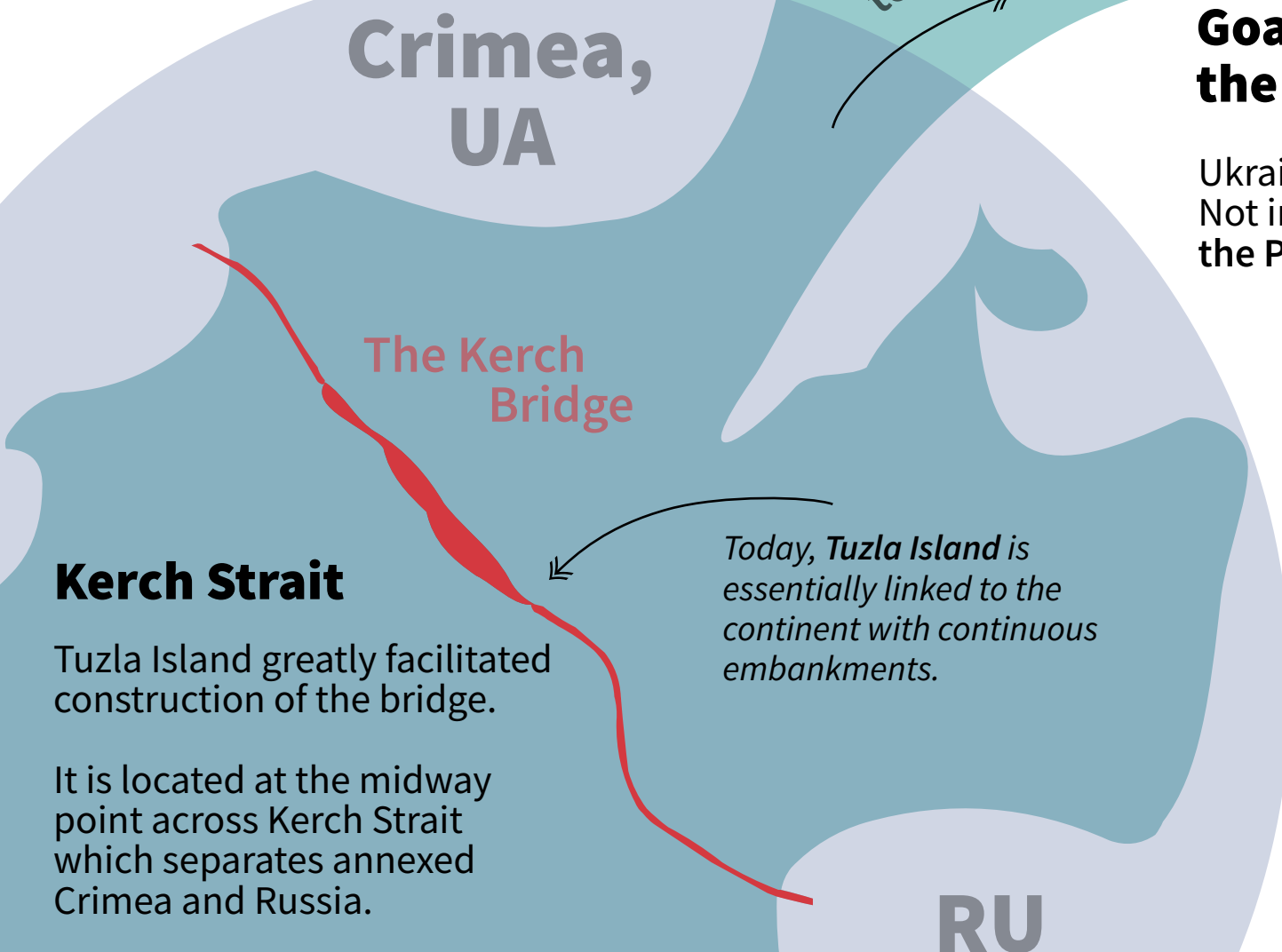
14 m

a draft of Panamax ships

The Kerch bridge became a physical obstacle to ships heading to Ukrainian ports in the Sea of Azov.

Results

- #1 Shipping calls to Ukrainian ports steeply fallen
- #2 Ukrainian metal exports decreased



Crimea, UA

The Kerch Bridge

Kerch Strait

Tuzla Island greatly facilitated construction of the bridge.

It is located at the midway point across Kerch Strait which separates annexed Crimea and Russia.

Today, Tuzla Island is essentially linked to the continent with continuous embankments.

to Azov sea

RU